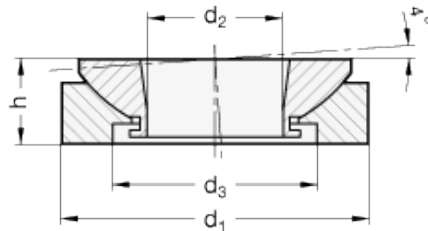


# GN 350.3-NI

Levelling washers  
single body not removable



INOX  
Stainless Steel



## technical informations

### Material

AISI 303 stainless steel.

### Applications

Levelling washers GN 350.3-NI have been designed to match the levelling sets GN 350, GN 350.1, GN 350.2 and GN 350.5. The two spherical washers are used together „und detachably“.

The load bearing capacity of these spherical washers is relatively high. This is not only due to the material quality but also to the matched sphere of the concave „pan“.

Furthermore it is recommended using high-strength washers for bridging  $d_2$ .

Standard Elements	Main dimensions				Max. screw dimension	Static load in kN	Weight
	$d_{1-1}$	$d_2$	$d_3$	h			g
GN 350.3-25-NI	25	8.5	15	8	M6	27.1	22
GN 350.3-32-NI	32	13	20	10	M10	43.4	44
GN 350.3-45-NI	45	20	30	12.5	M16	84	104
GN 350.3-58-NI	58	29	38	16	M24	148	215
GN 350.3-70-NI	70	36	48	20	M30	225	372
GN 350.3-80-NI	80	44	61	20	M36	323	427
GN 350.3-105-NI	105	78	25	58	M48	546	430



ELESA and GANTER models all rights reserved in accordance with the law. Always mention the source when reproducing our drawings.

**STANDARD MACHINE ELEMENTS WORLDWIDE**